

# *LED Tape Product Guide*

Published August 2014



Plug and Play LED Tape Kits															
Description	DIY LED Tape Kits - 5m									Waterproof DIY LED Tape Kits - 5m <sup>N</sup>				Intelligent Tape <sup>N</sup> Install Kits - 5m	
Item ref	153.724UK	153.726UK	153.730UK	153.729UK	153.723UK	153.732UK	153.733UK <sup>N</sup>	153.735UK <sup>N</sup>	153.727UK	153.691UK	153.690UK	153.692UK	153.693UK	156.759UK	156.760UK
Colour	Warm white (3100K)	Cool white (5000K)	Red	Green	Blue	Amber	Cyan	Pink	RGB multi-colour	Warm white (3100K)	Cool white (5000K)	Blue	RGB multi-colour	RGB multi-colour	RGB multi-colour
Extendable	X	X	X	X	X	X	X	X	X	X	X	X	X	✓	✓
LEDs per metre	60	60	60	60	60	60	60	60	30	60	60	60	30	48	48
IP rating	IP65	IP65	IP65	IP65	IP65	IP65	IP65	IP65	IP65	IP68	IP68	IP68	IP68	IP65	IP65
Power consumption	3.6W/m	3.6W/m	3.6W/m	3.6W/m	3.6W/m	3.6W/m	3.6W/m	3.6W/m	7.2W/m	3.6W/m	3.6W/m	3.6W/m	7.2W/m	11.2W/m	11.2W/m
Cut intervals	5cm	5cm	5cm	5cm	5cm	5cm	5cm	5cm	10cm	5cm	5cm	5cm	10cm	12.5cm	12.5cm
Power supply included in kit	✓	✓	✓	✓	✓	✓	✓	✓	✓	✓	✓	✓	✓	✓	✓
LED tape controller included in kit	N/A	N/A	N/A	N/A	N/A	N/A	N/A	N/A	✓	N/A	N/A	N/A	✓	✓	N/A

Professional Install LED Tape Reels										
Description		12Vdc LED Tape Reel 5m <sup>N</sup>								
Item ref		156.718UK	156.717UK	156.705UK	156.708UK	156.711UK	156.714UK	156.706UK	156.720UK	156.721UK
Replaces		153.718UK	153.717UK	153.705UK	153.708UK	153.711UK	153.714UK	153.706UK	153.720UK	153.721UK
Colour		Warm white 2700K	Cool white 6500K	Red	Green	Blue	Yellow	Pink	RGB multi-colour	RGB multi-colour
Extendable		✓	✓	✓	✓	✓	✓	✓	✓	✓
LEDs per metre		60	60	60	60	60	60	60	60	30
IP rating		IP65	IP65	IP65	IP65	IP65	IP65	IP65	IP65	IP65
Power consumption		4.8W/m	4.8W/m	4.8W/m	4.8W/m	4.8W/m	4.8W/m	4.8W/m	14.4W/m	7.2W/m
Cut intervals		5cm	5cm	5cm	5cm	5cm	5cm	5cm	5cm	10cm
Compatible Power Supplies	153.754UK	12Vdc power supply 2.5A 30W	✓	✓	✓	✓	✓	✓	✓	✓
	153.753UK	12Vdc power supply 3.75A 45W	✓	✓	✓	✓	✓	✓	✓	✓
	153.744UK	12Vdc power supply 5A 60W	✓	✓	✓	✓	✓	✓	✓	✓
	153.755UK	12Vdc power supply 8.3A 100W	✓	✓	✓	✓	✓	✓	✓	✓
	153.756UK	12Vdc power supply 12.5A 150W	✓	✓	✓	✓	✓	✓	✓	✓
	153.757UK	24Vdc power supply 1.25A 30W								
	153.758UK	24Vdc power supply 1.87A 45W								
	153.759UK	24Vdc power supply 2.5A 60W								
	153.760UK	24Vdc power supply 4.16A 100W								
	153.761UK	24Vdc power supply 6.25A 150W								
	153.762UK	24Vdc power supply 8.33A 200W								
	153.763UK	24Vdc power supply 10.41A 250W								
	153.764UK	24Vdc power supply 12.5A 300W								
	Compatible LED Tape Controllers	153.741UK	IR RGB LED tape controller 24 key							✓
153.751UK		IR LED tape controller 44 key							✓	✓
153.700UK		In-line LED tape controller	✓	✓	✓	✓	✓	✓		
153.698UK		RF LED tape controller	✓	✓	✓	✓	✓	✓		
153.702UK		In-line RGB LED tape controller							✓	✓
153.699UK		RF RGB LED tape controller							✓	✓
153.767UK <sup>N</sup>		Bluetooth RGB LED tape controller							✓	✓
153.768UK <sup>N</sup>		RF RGB LED tape controller IP68							✓	✓
Compatible Signal Amplifiers	153.701UK	In-line RGB LED tape amplifier							✓	✓
	153.771UK <sup>N</sup>	In-Line RGB LED tape amplifier with DC socket							✓	✓
	153.770UK <sup>N</sup>	In-line LED tape amplifier	✓	✓	✓	✓	✓	✓		
	153.773UK <sup>N</sup>	IP68 LED tape amplifier	✓	✓	✓	✓	✓	✓		
	153.774UK <sup>N</sup>	IP68 RGB LED tape amplifier							✓	✓
Compatible Connectors	156.135UK <sup>N</sup>	L connector for single colour LED tape	✓	✓	✓	✓	✓	✓		
	156.137UK <sup>N</sup>	T connector for single colour LED tape	✓	✓	✓	✓	✓	✓		
	156.139UK <sup>N</sup>	X connector for single colour LED tape	✓	✓	✓	✓	✓	✓		
	156.136UK <sup>N</sup>	L connector for RGB LED tape							✓	✓
	156.138UK <sup>N</sup>	T connector for RGB LED tape							✓	✓
	156.140UK <sup>N</sup>	X connector for RGB LED tape							✓	✓

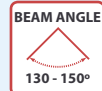


Description		24Vdc LED Tape Reel 5m <span style="float: right;">N</span>									
Item ref		156.768UK	156.767UK	156.755UK	156.758UK	156.761UK	156.764UK	156.756UK	156.770UK	156.771UK	
Replaces		N/A	N/A	N/A	N/A	N/A	N/A	N/A	N/A	N/A	
Colour		Warm white 2700K	Cool white 6500K	Red	Green	Blue	Yellow	Pink	RGB multi-colour	RGB multi-colour	
Extendable		✓	✓	✓	✓	✓	✓	✓	✓	✓	
LEDs per metre		60	60	60	60	60	60	60	60	30	
IP rating		IP65	IP65	IP65	IP65	IP65	IP65	IP65	IP65	IP65	
Power consumption		4.8W/m	4.8W/m	4.8W/m	4.8W/m	4.8W/m	4.8W/m	4.8W/m	14.4W/m	7.2W/m	
Cut intervals		10cm	10cm	10cm	10cm	10cm	10cm	10cm	10cm	20cm	
Compatible Power Supplies	153.754UK	12Vdc power supply 2.5A 30W									
	153.753UK	12Vdc power supply 3.75A 45W									
	153.744UK	12Vdc power supply 5A 60W									
	153.755UK	12Vdc power supply 8.3A 100W									
	153.756UK	12Vdc power supply 12.5A 150W									
	153.757UK	✓	✓	✓	✓	✓	✓	✓	✓	✓	✓
	153.758UK	✓	✓	✓	✓	✓	✓	✓	✓	✓	✓
	153.759UK	✓	✓	✓	✓	✓	✓	✓	✓	✓	✓
	153.760UK	✓	✓	✓	✓	✓	✓	✓	✓	✓	✓
	153.761UK	✓	✓	✓	✓	✓	✓	✓	✓	✓	✓
	153.762UK	✓	✓	✓	✓	✓	✓	✓	✓	✓	✓
	153.763UK	✓	✓	✓	✓	✓	✓	✓	✓	✓	✓
	153.764UK	✓	✓	✓	✓	✓	✓	✓	✓	✓	✓
Compatible LED Tape Controllers	153.741UK	IR RGB LED tape controller 24 key								✓	✓
	153.751UK	IR LED tape controller 44 key								✓	✓
	153.700UK	✓	✓	✓	✓	✓	✓	✓			
	153.698UK	✓	✓	✓	✓	✓	✓	✓			
	153.702UK	In-line RGB LED tape controller								✓	✓
	153.699UK	RF RGB LED tape controller								✓	✓
	153.767UK <span style="color: red;">N</span>	Bluetooth RGB LED tape controller								✓	✓
	153.768UK <span style="color: red;">N</span>	RF RGB LED tape controller IP68								✓	✓
Compatible Signal Amplifiers	153.701UK	In-line RGB LED tape amplifier								✓	✓
	153.771UK <span style="color: red;">N</span>	In-Line RGB LED tape amplifier with DC socket								✓	✓
	153.770UK <span style="color: red;">N</span>	✓	✓	✓	✓	✓	✓	✓			
	153.773UK <span style="color: red;">N</span>	✓	✓	✓	✓	✓	✓	✓			
	153.774UK <span style="color: red;">N</span>	IP68 RGB LED tape amplifier								✓	✓
Compatible Connectors	156.135UK <span style="color: red;">N</span>	✓	✓	✓	✓	✓	✓	✓			
	156.137UK <span style="color: red;">N</span>	✓	✓	✓	✓	✓	✓	✓			
	156.139UK <span style="color: red;">N</span>	✓	✓	✓	✓	✓	✓	✓			
	156.136UK <span style="color: red;">N</span>	L connector for RGB LED tape								✓	✓
	156.138UK <span style="color: red;">N</span>	T connector for RGB LED tape								✓	✓
	156.140UK <span style="color: red;">N</span>	X connector for RGB LED tape								✓	✓



## DIY LED Tape Blister Pack Kits

A range of retail ready blister packed LED tape kits. Low voltage operated at 12Vdc. The self adhesive backing allows for quick and easy installation in the home, caravan, cars or lorries.



Single colour kits include:

1 x 5m LED tape reel  
12Vdc power supply  
with world adaptors

Connectors



**60**  
LEDs  
per METRE

**5cm**  
CUT  
INTERVALS

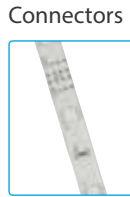
**3.6W**  
per  
METRE

Power supply ..... 12Vdc Current ..... 300mA/m  
LED type ..... SMD3528 Cross-section ..... .815 x 2.76mm  
LED spacing ..... 16mm Weight ..... 173g

Multi-colour kit includes:

1 x 5m LED tape reel  
IR remote control  
12Vdc power supply  
with world adaptors

Connectors



**30**  
LEDs  
per METRE

**10cm**  
CUT  
INTERVALS

**7.2W**  
per  
METRE

Power supply ..... 12Vdc Current ..... 600mA/m  
LED type ..... SMD5050 RGB Cross-section ..... .10 x 2.4mm  
LED spacing ..... 32mm Weight ..... 230g

	DIY-WW60	DIY-CW60	DIY-R60	DIY-G60	DIY-B60	DIY-A60	DIY-C60	DIY-PK60	DIY-RGB30
Item ref	153.724UK	153.726UK	153.730UK	153.729UK	153.723UK	153.732UK	153.733UK	153.735UK	153.727UK
Colour	Warm white (3100K)	Cool white (5000K)	Red	Green	Blue	Amber	Cyan <b>NEW</b>	Pink <b>NEW</b>	RGB multi-colour

## Waterproof DIY LED Tape Kits

A range of retail ready blister packed LED tape kits. Low voltage operated at 12Vdc. The tape is IP68 rated allowing it to be fully submersed in water.



**NEW**



	DIYH-WW60	DIYH-CW60	DIYH-B60	DIYH-RGB30
Item ref	153.691UK	153.690UK	153.692UK	153.693UK
Colour	Warm white (3100K)	Cool white (5000K)	Blue	RGB multi-colour

Single colour kits include:

1 x 5m LED tape reel  
12Vdc power supply  
with world adaptors

Connectors



**60**  
LEDs  
per METRE

**5cm**  
CUT  
INTERVALS

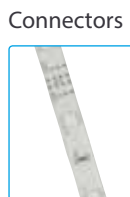
**3.6W**  
per  
METRE

Voltage ..... 12Vdc Current ..... 300mA/m  
LED type ..... SMD3528 Cross section ..... .815 x 2.76mm  
LED spacing ..... 16mm Weight ..... 173g

Multi-colour kit includes:

1 x 5m LED tape reel  
IR remote control  
12Vdc power supply  
with world adaptors

Connectors



**30**  
LEDs  
per METRE

**10cm**  
CUT  
INTERVALS

**7.2W**  
per  
METRE

Voltage ..... 12Vdc Current ..... 600mA/m  
LED type ..... SMD5050 RGB Cross section ..... .10 x 2.4mm  
LED spacing ..... 32mm Weight ..... 230g

# Intelligent LED Tape Kit

This incredible LED tape creates mesmerising and magical colour changing effects.

The controller addresses each LED independently to create numerous smooth, fluid, colour changing effects.

The tape can be easily extended for longer runs, creating a continuous cascade.

**48**  
LEDs  
per METRE

**12.5cm**  
CUT  
INTERVALS

**4.8W**  
per  
METRE

BEAM ANGLE  
120°

**IP65**

**5m**  
REEL  
LENGTH

NEW

INCREDIBLE NEW TECHNOLOGY!



SCAN TO WATCH THE VIDEO



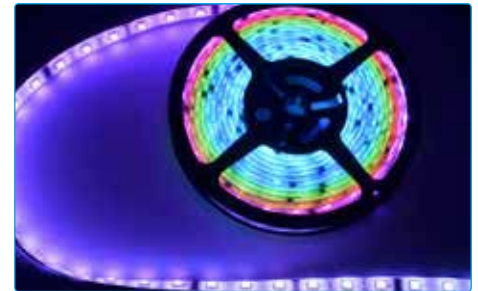
- 99 modes with 10 speeds levels & 29 static colours with 10 brightness levels
- Extend up to a maximum of 50 metres
- Self-adhesive backing for easy installation



	FIT1240-RGB	FITE240-RGB
Item ref	156.759UK	156.760UK
Version	Master kit	Extension kit

Power supply ..... 12Vdc, 3A  
 LED type ..... SMD5050  
 Light intensity per LED ..... 2000mcd  
 LED spacing ..... 21mm  
 LED lifespan ..... approx. 50,000 hours

Current ..... 480mA per metre  
 Power consumption per metre ..... 4.8W max.  
 Connectors ..... 5.5mm DC jack  
 Max. connection length ..... 50 metres  
 Cross-section ..... 12 x 3mm



Master kit includes:  
 1 x 5m LED tape reel  
 12Vdc power supply  
 LED controller with RF remote



Remote range ... 15 metres (line of sight)  
 Remote battery ..... 1 x CR2025  
 Weight ..... 550g

Extension kit includes:  
 1 x 5m LED tape reel  
 12Vdc power supply



Weight ..... 540g



## Professional LED Tape Install Guide

### Installing Single Colour LED Tape

This tape has easy-to-use connections to shorten, lengthen or customise any installation.



Cut tape to desired length, cut intervals are marked on the tape



Connect DC plug to DC socket & select correct mains adaptor



To extend the tape, cut into epoxy coating and remove to reveal the connection points



Solder the DC wire to the connections on both pieces of LED tape



Remove paper from the adhesive backing and install

### Installing RGB LED Tape

This tape has 4-pin accessories for easy set-up and installation.



Cut tape to desired length, cut intervals are marked on the tape



Connect DC plug to control receiver, and receiver to the LED tape 4-pin connector



To extend the tape, cut into epoxy coating and remove to reveal the connection points



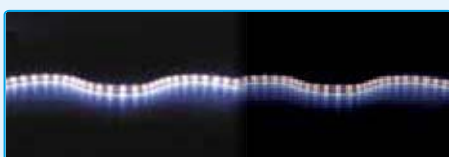
Solder the DC wire to the connections on both pieces of LED tape



Remove paper from the adhesive backing and install

### Signal Amplifiers

If you run long lengths of LED tape past 10m, the power will drop and so will the brightness of the LEDs. For larger installations we recommend you use a signal amplifier. This allows the signal to pass through while boosting the power via a power socket. This makes the LED tape ideal for larger installation and only requires the use of one controller.



Bright LEDs 10cm from power source Dim LEDs 10m from power source



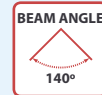
Add a signal amplifier and power supply to boost the power



Bright LEDs 10cm from power source Bright LEDs 10m from power source

# 12V Professional Installation LED Tape

A range of 12V professional install, super-bright LED tape. The LEDs are covered with an epoxy coating to protect the tape from general wear and tear as well as being water resistant. The wider FPCB strip is better for conductivity and heat dissipation.



**NEW**

## SINGLE COLOUR

**60** LEDs per METRE  
**5cm** CUT INTERVALS  
**4.8W** per METRE



Voltage ..... 12Vdc  
 LED type ..... Epistar™ SMD3528  
 LED spacing ..... 16mm  
 Current ..... 400mA per metre  
 Cross-section ..... 10.5 x 2.55mm  
 Weight ..... 210g

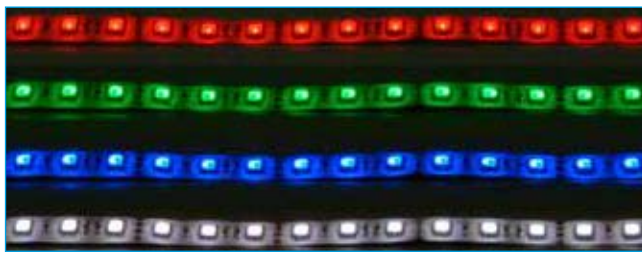


## RGB MULTI-COLOUR

**60** LEDs per METRE  
**5cm** CUT INTERVALS  
**14.4W** per METRE



156.720UK



Voltage ..... 12Vdc  
 LED type ..... Epistar™ RGB5050  
 LED spacing ..... 16mm  
 Current ..... 1200mA per metre  
 Cross-section ..... 12 x 3mm  
 Weight ..... 230g

## RGB MULTI-COLOUR

**30** LEDs per METRE  
**10cm** CUT INTERVALS  
**7.2W** per METRE



156.721UK



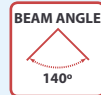
Voltage ..... 12Vdc  
 LED type ..... Epistar™ RGB5050  
 LED spacing ..... 32mm  
 Current ..... 600mA per metre  
 Cross-section ..... 12 x 3mm  
 Weight ..... 230g

	LT12560-WW	LT12560-CW	LT12560-RD	LT12560-GR	LT12560-BL	LT12560-YW	LT12560-PK	LT12560-RGB	LT12530-RGB
Item ref	156.718UK	156.717UK	156.705UK	156.708UK	156.711UK	156.714UK	156.706UK	156.720UK	156.721UK
Colour	Warm white (2700K)	Cool white (6500K)	Red	Green	Blue	Yellow	Pink	RGB multi-colour	RGB multi-colour
Luminous flux	180lm/m	180lm/m	60lm/m	130lm/m	30lm/m	45lm/m	120lm/m	600lm/m	400lm/m
Light intensity per LED	2400mcd	2400mcd	600mcd	1200mcd	500mcd	600mcd	1000mcd	6000mcd	6000mcd



# 24V Professional Installation LED Tape

A range of 24V professional install, super-bright LED tape. The LEDs are covered with an epoxy coating to protect the tape from general wear and tear as well as being water resistant. 24V current allows the tape to be run to twice the length compared to the 12V versions.



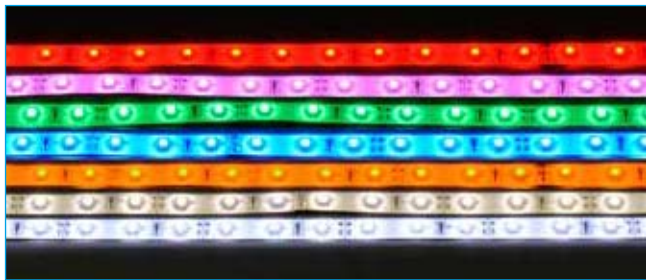
**NEW**

## SINGLE COLOUR

**60**  
LEDs  
per METRE

**10cm**  
CUT  
INTERVALS

**4.8W**  
per  
METRE



Voltage .....24Vdc  
LED type .....Epistar™ SMD3528  
LED spacing..... 16mm  
Current ..... 200mA per metre  
Cross-section..... 10.5 x 2.55mm  
Weight.....210g



## RGB MULTI-COLOUR

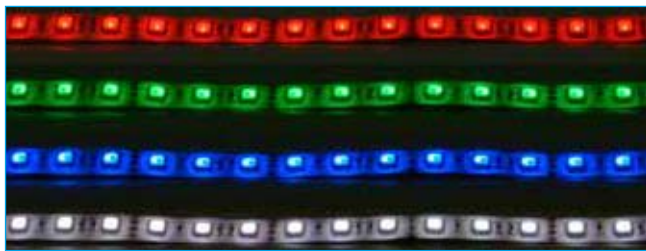
**60**  
LEDs  
per METRE

**10cm**  
CUT  
INTERVALS

**14.4W**  
per  
METRE



156.770UK



Voltage .....24Vdc  
LED type ..... Epistar™ RGB5050  
LED spacing..... 16mm  
Current ..... 1200mA per metre  
Cross-section..... 12 x 3mm  
Weight.....230g

## RGB MULTI-COLOUR

**30**  
LEDs  
per METRE

**20cm**  
CUT  
INTERVALS

**7.2W**  
per  
METRE



156.771UK



Voltage .....24Vdc  
LED type ..... Epistar™ RGB5050  
LED spacing..... 32mm  
Current ..... 600mA per metre  
Cross-section..... 12 x 3mm  
Weight.....230g

	LT24560-WW	LT24560-CW	LT24560-RD	LT24560-GR	LT24560-BL	LT24560-YW	LT24560-PK	LT24560-RGB	LT24530-RGB
Item ref	156.768UK	156.767UK	156.755UK	156.758UK	156.761UK	156.764UK	156.756UK	156.770UK	156.771UK
Colour	Warm white (2700K)	Cool white (6500K)	Red	Green	Blue	Yellow	Pink	RGB multi-colour	RGB multi-colour
Luminous flux	180lm/m	180lm/m	60lm/m	130lm/m	30lm/m	45lm/m	120lm/m	600lm/m	400lm/m
Light intensity per LED	2400mcd	2400mcd	600mcd	1200mcd	500mcd	600mcd	1000mcd	6000mcd	6000mcd



## PROFESSIONAL UNIVERSAL 12Vdc POWER SUPPLIES

These power supplies are designed to be used by qualified people to install LED tape. Each has a different power output to suit different requirements for each job.



- Ideal for 12Vdc LED tape and MR16 lamp installations
- 1 or 2 outputs for loop output connection
- For professional use



	PS30	PS45	PS60	PS100	PS150
Item ref	<b>153.754UK</b>	<b>153.753UK</b>	<b>153.744UK</b>	<b>153.755UK</b>	<b>153.756UK</b>
Power supply	170-250Vac, 50/60Hz	170-250Vac, 50/60Hz	170-250Vac, 50/60Hz	170-250Vac, 50/60Hz	170-250Vac, 50/60Hz
Voltage out	12Vdc	12Vdc	12Vdc	12Vdc	12Vdc
Total power output	30W	45W	60W	100W	150W
Output feeds	1	1	1	2	2
Current	2.5A	3.75A	5A	8.3A	12.5A
IP rating	IP65	IP65	IP66	IP66	IP66
Dimensions	179 x 34 x 23mm	230 x 35 x 23mm	182 x 72 x 45mm	202 x 72 x 45mm	244 x 72 x 45mm
Weight	280g	397g	850g	1.2kg	2.75kg

## UNIVERSAL 24Vdc LED DRIVERS

A range of IP66 rated 24Vdc LED driver, available from 30W to 300W output power, suitable for both indoor and outdoor lighting installation. For Professional Use Only.



**NEW**

- 1 or 2 outputs for loop output connection
- Short circuit protection



	PS30-24	PS45-24	PS60-24	PS100-24	PS150-24	PS200-24	PS250-24	PS300-24
Item ref	<b>153.757UK</b>	<b>153.758UK</b>	<b>153.759UK</b>	<b>153.760UK</b>	<b>153.761UK</b>	<b>153.762UK</b>	<b>153.763UK</b>	<b>153.764UK</b>
Input voltage	230Vac, 50/60Hz	230Vac, 50/60Hz	230Vac, 50/60Hz	230Vac, 50/60Hz	230Vac, 50/60Hz	230Vac, 50/60Hz	230Vac, 50/60Hz	230Vac, 50/60Hz
Output voltage	24Vdc	24Vdc	24Vdc	24Vdc	24Vdc	24Vdc	24Vdc	24Vdc
Total Power OUT	30W	45W	60W	100W	150W	200W	250W	300W
Output feeds	1	1	1	2	2	4	3	4
Current	1.25A	1.87A	2.5A	4.16A	6.25A	8.33A	10.41A	12.5A
Dimensions	216 x 30 x 20mm	252 x 40 x 22mm	159 x 70 x 45mm	240 x 70 x 45mm	245 x 70 x 48mm	235 x 125 x 65mm	235 x 120 x 56mm	235 x 120 x 56mm
Weight	250g	400g	782g	1.25kg	2.8kg	2.8kg	3kg	3.2kg

### RGB LED TAPE CONTROLLER WITH 24 KEY IR REMOTE

- Mounting points for attachment to a wall or other surfaces
- 4 different colour changing modes of operation
- 16 preset static colour modes
- Adjustable brightness



	<b>LTC221R</b>
Item ref	<b>153.741UK</b>

Power supply ..... 12Vdc (2.1mm DC socket)  
 Max current per channel ..... 3 x 2A  
 Remote battery ..... 1 x CR2025  
 Remote range..... 10m (line of sight)

Dimensions (remote)......85 x 55 x 8mm  
 Weight (remote) .....21g  
 Dimensions (controller) ..... 35 x 50 x 25mm  
 Weight (controller) .....30g

### RGB TAPE CONTROLLER WITH 44 KEY IR REMOTE

- Mounting points for attachment to a wall or other surface
- 6 different colour changing modes of operation with speed control
- RGB manual colour adjust with 6 memory banks
- 20 preset static colour modes
- Adjustable brightness



	<b>LTC441R</b>
Item ref	<b>153.751UK</b>

Power supply ..... 12Vdc (2.1mm DC socket)  
 Max current per channel ..... 3 x 2A  
 Remote battery ..... 1 x CR2025  
 Remote range..... 10m (line of sight)

Dimensions (remote)...... 125 x 55 x 8mm  
 Weight (remote) .....33g  
 Dimensions (controller) ..... 35 x 50 x 25mm  
 Weight (controller) .....30g

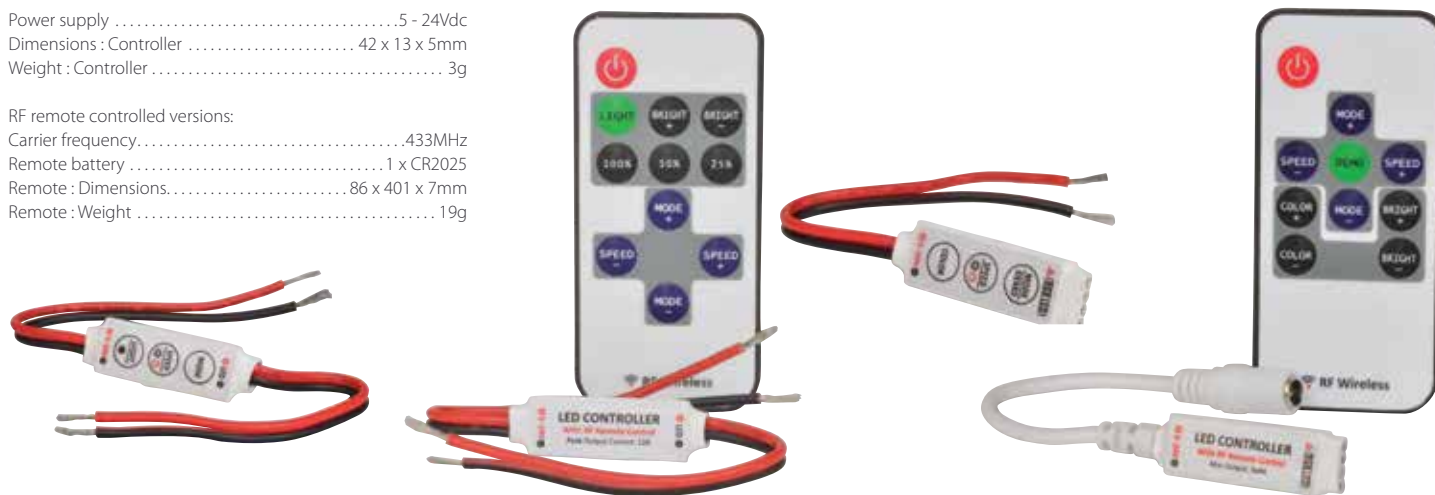
### IN-LINE LED TAPE CONTROLLERS

A range of miniature in-line controllers for connection between a power supply and LED tape. Designed to take advantage of the versatility of LED tape to offer eye-catching effects in a neat and efficient format.

- Compatible with LED tape 5-24Vdc
- Discreet, miniature design

Power supply .....5 - 24Vdc  
 Dimensions : Controller ..... 42 x 13 x 5mm  
 Weight : Controller ..... 3g

RF remote controlled versions:  
 Carrier frequency......433MHz  
 Remote battery ..... 1 x CR2025  
 Remote : Dimensions...... 86 x 401 x 7mm  
 Remote : Weight ..... 19g



	<b>ILC2</b>	<b>IL2W</b>	<b>ILC4</b>	<b>IL4W</b>
Item ref	<b>153.700UK</b>	<b>153.698UK</b>	<b>153.702UK</b>	<b>153.699UK</b>
Controls	Mode, speed (off), light (dim)	Off/, light, mode+/-, speed+/-, bright+/-, 25/50/100%	Mode/demo, speed (off), colour	Off, demo, mode+/-, speed+/-, bright+/-, color+/-
Wire length	2 x 100mm	100mm	100mm	100mm
Input	5-24Vdc	5-24Vdc	5-24Vdc	5-24Vdc
Output	5-24Vdc	5-24Vdc	4-pin RGB	4-pin RGB
Continuous current	6A	6A	3 x 2A	3 x 2A
Current max.	12A	12A	3 x 4A	3 x 4A



## BLUETOOTH™ RGB LED CONTROLLER

Control colour changing LED tape from your smartphone.

Once the RayColor™ app is installed on your device, instructions are sent from the smartphone to the controller via Bluetooth™ signal.

16 million static colours and 42 dynamic modes to choose from.



- RayColor™ application required, available on iOS & Android platforms
- For use with 6-24V low voltage RGB LED tape
- 16 million static colours
- 42 dynamic modes with 100 speeds
- Overload & overheat protection
- Range of up to 10 metres
- Waterproof IP68
- Please note: underwater installation will reduce the sensitivity of the signal receiver



	<b>BTC1</b>
Item ref	<b>153.767UK</b>

Voltage .....	6-24Vdc
Suitable for .....	iOS or Android device
Connection .....	Bluetooth™ V2.1 Class 2
Output current .....	3 x 5A
PWM frequency .....	8kHz
Operating temperature .....	-30°C to +80°C
IP rating .....	IP68
Max. install depth .....	30m
Range .....	10m
Dimensions .....	125 x 90 x 10mm
Weight .....	29.6g

## WATERPROOF RF RGB LED TAPE CONTROLLER

Control colour changing LED tape easily with this controller unit. Control instructions are sent from the included remote control to the waterproof receiver via radio frequency.



- For use with low voltage RGB LED installation tape
- 30 static colour options
- 43 dynamic modes
- Overload & overheat protection
- RF remote control included
- Waterproof IP68 receiver allows underwater installation of controller
- Please note: underwater installation will reduce the sensitivity of the signal receiver



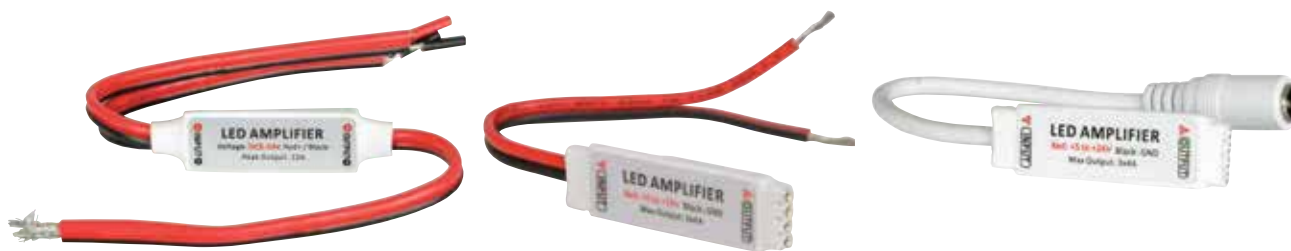
Voltage .....	5-24Vdc
Output current .....	3 x 5A
PWM frequency .....	8kHz
Operating temperature .....	-30°C to +80°C
Remote frequency .....	433.92MHz
Remote range .....	15m
IP rating .....	IP68
Max. install depth .....	30m
Dimensions : Controller .....	125 x 90 x 10mm
Weight : Controller .....	10g
Dimensions : Remote .....	85 x 100 x 8mm
Weight : Remote .....	20g

	<b>RFC1</b>
Item ref	<b>153.768UK</b>

## IN-LINE LED TAPE REPEATER AMPLIFIERS

A range of miniature in-line repeater amplifiers for connection to LED tape. Designed to take advantage of the versatility of LED tape to offer eye-catching effects in a neat and efficient format.

- Compatible with LED tape 5-24Vdc
- Discreet, miniature design



Wire length ..... 100mm  
 Dimensions ..... 42 x 13 x 5mm  
 Weight ..... 3g

	ILA2	ILA4	ILADC4
Item ref	<b>153.770UK</b>	<b>153.701UK</b>	<b>153.771UK</b>
Input	5-24Vdc	5-24Vdc + 4-pin RGB	5-24Vdc + DC jack
Output	5-24Vdc	4-pin RGB	4-pin RGB
Continuous current	6A	3 x 2A	3 x 2A
Current max.	12A	3 x 4A	3 x 4A

## WATERPROOF LED TAPE REPEATER AMPLIFIERS

Repeater/amplifiers for creating long runs or chains of LED tape or strip lighting.

From any given LED controller, the number of LEDs which can be connected is determined by the power output of the controller and the power capacity of LED tape or link cables. Beyond this limit, it is necessary to boost the power of the control voltage for each colour. Connecting this amplifier to the end of the chain enables more LEDs to be operated from the same controller, making large arrays of colour mixing lighting possible.



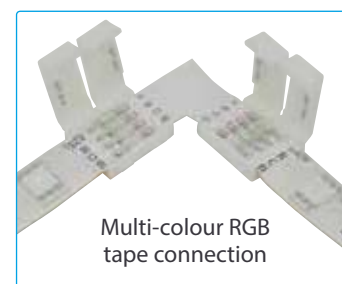
- For use with low voltage LED tape or strip
- Overload, short circuit & overheat protection
- Waterproof IP68 unit allows underwater installation of up to 30m depth



Voltage ..... 5-24Vdc  
 Operating temperature ..... -30°C to +80°C  
 IP rating ..... IP68  
 Max. install depth ..... 30m  
 Efficiency ..... >97%  
 Dimensions ..... 125 x 90 x 10mm  
 Weight ..... 25g

	ILAS2-W	ILAC2-W
Item ref	<b>153.773UK</b>	<b>153.774UK</b>
Tape version	Single colour	RGB
Output current	10A	3 x 3.5A

## LED TAPE CONNECTORS



	LC5-SLE	TC5-SLE	XC5-SLE	LC5-RGB	TC5-RGB	XC5-RGB
Item ref	<b>156.135UK</b>	<b>156.137UK</b>	<b>156.139UK</b>	<b>156.136UK</b>	<b>156.138UK</b>	<b>156.140UK</b>
LED tape	Single colour	Single colour	Single colour	RGB	RGB	RGB
Version	5 x L connectors	5 x T connectors	5 x X connectors	5 x L connectors	5 x T connectors	5 x X connectors
Dimensions	28 x 28 x 3mm	48 x 30 x 3mm	48 x 48 x 3mm	30 x 30 x 5mm	50 x 32 x 5mm	50 x 50 x 5mm